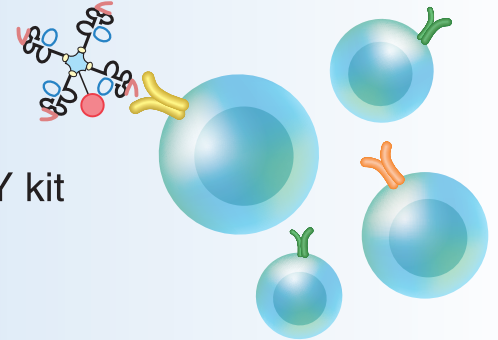


## A Powerful Tool for T cell Monitoring by Flow Cytometry

# MHC Tetramer

- Antigen-specific T cell detection & isolation
- Variety of choices from catalog items, custom MHC Class I/II alleles & peptide exchangeable DIY kit
- Referable various citations for your purpose

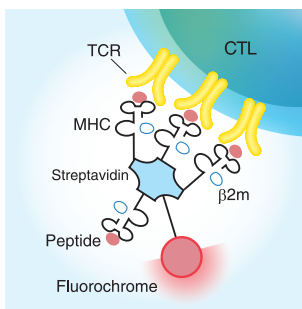


## Verify Existence of T cells of Your Interest

T cells play a critical role in the pathologies and treatments of life threatening diseases such as cancer, infectious diseases, and autoimmune diseases.

MBL's MHC tetramer reagents enable users rapid and simple detection of the antigen-specific T cells and other type of immune cells by flow cytometry.

## What Is MBL's MHC Tetramer?



### Uniform

biotin-streptavidin based tetramerization

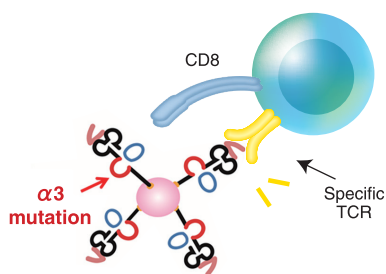
### High Specificity

mutational modification to reduce nonspecific binding in HLA Class I tetramer

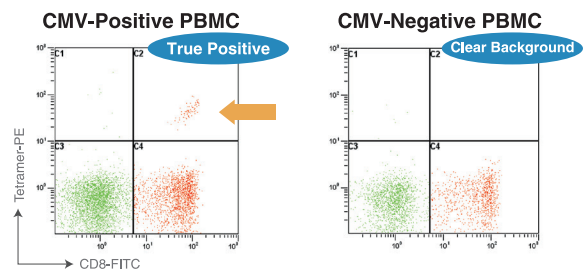
### Ready-to-Use

PE, APC, FITC labeled

## Why Is MBL's HLA Class I Tetramer so Specific?



$\alpha 3$  mutation reduces nonspecific binding to CD8



# Product Lineup

## Ready-Made Products

- Search tetramers from our website in combination with alleles & peptides.
- Used in the field of cancer, virus infection, model antigen (OVA) etc.

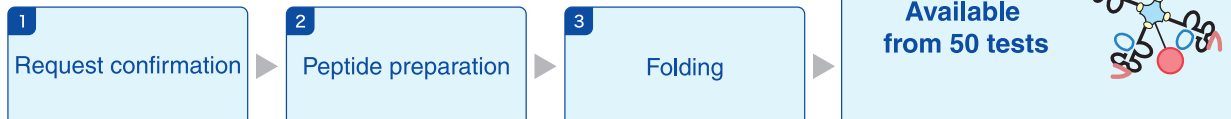
Search here for  
MBL tetramer products



## Custom Tetramer

### MHC custom tetramer

MBL prepares tetramers with MHC alleles and peptide of your choice.



### QuickSwitch™

Prepare custom tetramers in your laboratory!

- ✓ 4 hours
- ✓ no-UV
- ✓ up to 10 tetramer
- ✓ peptide exchange rate calculable

## Available Alleles (alleles for product or custom tetramer)

Class I						Class II	
HLA-A	HLA-B	HLA-C	HLA-E	Mouse	Other Animals	DRB1	Others
A*01:01	B*07:02	Cw*01:02	E*01:01	H-2K <sup>b</sup>	<b>Chicken</b>	DRB1*01:01	DRB4*01:01
A*02:01	B*08:01	Cw*03:03	E*01:03	H-2K <sup>d</sup>	BF2*1201	DRB1*03:01	DPB1*04:01
A*02:06	B*15:01	Cw*03:04		H-2D <sup>b</sup>	BF2*1501	DRB1*04:01	
A*02:07	B*15:02	Cw*06:02		H-2D <sup>d</sup>		DRB1*04:10	
A*03:01	B*27:05	Cw*08:01		H-2D <sup>k</sup>	<b>R.Macaque</b>	DRB1*04:05	
A*11:01	B*35:01	Cw*12:02		H-2L <sup>d</sup>	Mamu-A*90120-5	DRB1*07:01	
A*23:01	B*40:02	Cw*15:02		H-2K <sup>k</sup>	Mamu-A*01	DRB1*08:02	
A*24:02	B*40:06			Qa-1b		DRB1*08:03	
A*29:02	B*42:01				<b>M. Fascicularis</b>	DRB1*09:01	
A*31:01	B*57:01			<b>Chimeras</b>	Mafa-A1*063	DRB1*11:01	
A*33:03				A2K <sup>b</sup>	Mafa-B*104:01	DRB1*12:02	
				A24K <sup>b</sup>		DRB1*14:01	
						DRB1*14:06	
						DRB1*15:01	
						DRB1*15:02	

## Tetramer Application

- Main research fields: cancer, infectious disease, autoimmune disease, transplantation
- Screening of neoantigen epitopes
- Immune monitoring for immunotherapy
- Characterization of T cell function/receptors
- Proliferation of antigen-specific T cells

Find publications citing  
MBL tetramer.



For research use only. Not for use in diagnostic or therapeutic procedures.

The information is as of August 2023. Please contact us for the latest information. Please read the data sheets carefully before use.

Copyright © 2023 MEDICAL & BIOLOGICAL LABORATORIES CO., LTD. All Rights Reserved.

2023.08 155085-23081003N

Produced by

**MBL** MEDICAL & BIOLOGICAL  
LABORATORIES CO., LTD.

A JSR Life Sciences Company

SUMITOMO FUDOSAN SHIBADAIMON NICHOME BLDG.

2-11-8 Shibadaimon, Minato-ku, Tokyo 105-0012 Japan

TEL: +81-3-6854-3614 E-mail: support@mbl.co.jp

URL: <https://www.mblbio.com/bio/g/>