

MONOCLONAL ANTIBODY

Anti-FGFRL1 (Human) mAb

Code No.	Clone	Subclass	Quantity	Concentration
W321-3	9A1A10	Mouse IgG2b κ	100 μ L	1 mg/mL

BACKGROUND: Fibroblast growth factor receptor-like 1, also known as FGFRL1 or FGFR-5, is a member of the fibroblast growth factor receptor (FGFR) family. FGFRL1 consists of an extracellular region composed of three immunoglobulin-like domains, a single hydrophobic membrane-spanning segment, and a cytoplasmic tyrosine kinase domain. The extracellular domain contributes to cell adhesion. FGFRL1 is expressed preferentially in cartilaginous tissues and is also expressed in the pancreas, liver, kidney, heart, brain, and skeletal muscle.

SOURCE: This antibody was purified from hybridoma culture supernatant by Protein A affinity column chromatography.

IMMUNOGEN: Human FGFRL1 expressed Ba/F3 transfectants generated from SST-REX (signal sequence trap by retrovirus-mediated expression screening).

FORMULATION: 100 μ g IgG in 100 μ L volume of PBS containing 50% glycerol, pH 7.2. No preservative is contained.

STORAGE: This antibody solution is stable for one year from the date of purchase when stored at -20°C .

REACTIVITY: This antibody reacts with human FGFRL1 on Flow cytometry.

APPLICATIONS:

- Flow cytometry; 1-10 μ g/mL
- Western blotting; Not tested
- Immunoprecipitation; Not tested
- Immunohistochemistry; Not tested
- Immunocytochemistry; Not tested

Detailed procedure is provided in the following **PROTOCOL**.

INTENDED USE:

For Research Use Only. Not for use in diagnostic procedures.

Entrez Gene ID:

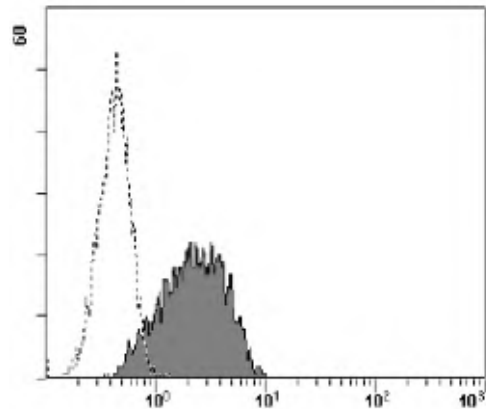
53834 (Human)

REFERENCES:

- 1) Trueb, B., *et al.*, *J. Biol. Chem.* **278**, 33857-33865 (2003)
- 2) Kim, I., *et al.*, *Biochim. Biophys. Acta* **1518**, 152-156 (2001)
- 3) Wiedemann, M. and Trueb, B., *Genomics* **69**, 275-279 (2000)
- 4) Kojima, T. and Kitamura, T., *Nat. Biotechnol.* **17**, 487-490 (1999)

SPECIES CROSS REACTIVITY:

Species	Human	Mouse	Rat	Hamster
Cells	Transfectant	Not tested	Not tested	Not tested
Reactivity on FCM	+			



Flow cytometric analysis of human FGFRL1 expression on Ba/F3 transfectant. Open histograms indicate the reaction of isotypic control to the cells. Shaded histograms indicate the reaction of W321-3 to the cells.

PROTOCOL:

Flow cytometric analysis for floating cells

We usually use Fisher tubes or equivalents as reaction tubes for all steps described below.

- 1) Wash the cells 3 times with washing buffer [PBS containing 2% fetal calf serum (FCS) and 0.05% NaN_3].
- 2) Resuspend the cells with washing buffer (2.5×10^6 cells/mL).
- 3) Add 200 μ L of cell suspension into each tube. And centrifuge at $500 \times g$ for 1 minute at room temperature ($20\sim 25^{\circ}\text{C}$). Remove supernatant by careful decantation.
- 4) Add 20 μ L of Clear Back (human Fc receptor blocking reagent, MBL; code no. MTG-001) to the cell pellet after tapping. Mix well and incubate for 5 minutes at room

- temperature.
- 5) Add 50 μ L of the primary antibody at the concentration as suggest in the **APPLICATIONS** diluted in the washing buffer. Mix well and incubate for 30 minutes at room temperature.
 - 6) Add 1 mL of the washing buffer followed by centrifugation at 500 x g for 1 minute at room temperature. Remove supernatant by careful decantation.
 - 7) Add 50 μ L of 1:200 anti-mouse IgG-PE (Beckman Coulter; code no. IM0855) diluted with the washing buffer. Mix well and incubate for 30 minutes at room temperature.
 - 8) Add 1 mL of the washing buffer followed by centrifugation at 500 x g for 1 minute at room temperature. Remove supernatant by careful decantation.
 - 9) Resuspend the cells with 500 μ L of the washing buffer and analyze by a flow cytometer.

(Positive control for Flow cytometry; transfectant)

- CY-E1082 FGFR2 Positive Control
CY-SPF04 FGFR1 (FLT2) (Human), Active
- W005-3 Anti-BTN2A1 (Human) mAb
W008-3 Anti-Carboxypeptidase D (Human) mAb
W010-3 Anti-CCDC107 (Human) mAb
W011-3 Anti-Dystroglycan (Human) mAb
W017-3 Anti-EphA2 (Human) mAb
W029-3 Anti-IGFBP1 (Human) mAb
W031-3 Anti-IGFBP6 (Human) mAb
W039-3 Anti-MANSC1 (Human) mAb
W041-3 Anti-Neuroplastin (Human) mAb
W046-3 Anti-CD201 (EPCR) (Human) mAb
W049-3 Anti-QSOX1 (Human) mAb
W050-3 Anti-RECK (Human) mAb
W052-3 Anti-Osteopontin (SPP1) (Human) mAb
W072-3 Anti-CD358 (DR6) (Human) mAb
W074-3 Anti-CRELD1 (Human) mAb
W077-3 Anti-GRK5 (Human) mAb
W080-3 Anti-ADAMTS1 (Human) mAb
W086-3 Anti-LYPD3 (C4.4A) (Human) mAb
W089-3 Anti-C11orf24 (Human) mAb
W109-3 Anti-TMED2 (Human) mAb
W111-3 Anti-DLL4 (Human) mAb
W117-3 Anti-TINAGL1 (Human) mAb
W124-3 Anti-GPR56 (Human) mAb
W125-3 Anti-GPR56 (Human) mAb
W128-3 Anti-CD318 (CDCP1) (Human) mAb
W147-3 Anti-TYRO3 (Human) mAb
W158-3 Anti-HEXA (Human) mAb
W164-3 Anti-RHBDD3 (Human) mAb
W172-3 Anti-CD172a (SIRP α) (Human) mAb
W181-3 Anti-Apolipoprotein D (Human) mAb
W194-3 Anti-FAM171A1 (Human) mAb
W253-3 Anti-Glypican 1 (Human) mAb
W321-3 Anti-FGFRL1 (Human) mAb
W357-3 Anti-CD105 (Endoglin) (Human) mAb
W358-3 Anti-CD300A (Human) mAb
W359-3 Anti-CD300C (Human) mAb
- M077-3 Mouse IgG2b (isotype control)
MTG-001 Clear Back (Human Fc receptor blocking reagent)

RELATED PRODUCTS:

CY-1082 CycLex[®] FGFR2 Kinase Assay/Inhibitor Screening Kit