

For Research Use Only.
Not for use in diagnostic procedures.



Positive control for anti-LC3 antibody

CODE No.	PM036-PN
QUANTITY	100 μ L (10 tests)
FORMULATION	1x10 ⁵ cells of human LC3B/293T were suspended with 100 μ L of Laemmli's sample buffer. This product contains 5% 2-mercaptoethanol. Handle with care.
STORAGE	This product is stable for one year from the date of purchase when stored at -20°C. Avoid repeated freeze/thaw cycles.
APPLICATION-CONFIRMED	
<u>Western blotting</u>	10 μ L/lane (ready-to-use)

For more information, please visit our web site <http://ruo.mbl.co.jp/>



RELATED PRODUCTSAntibodies

PM036	Anti-LC3 pAb	[WB, IP, IC, IHC, FCM]
M152-3	Anti-LC3 mAb (4E12)	[WB, IP, IC, FCM, EM]
M186-3	Anti-LC3 mAb (8E10)	[WB]
M186-7	Anti-LC3 mAb-HRP-DirecT (8E10)	
PD014	Anti-LC3 pAb	[WB]
PM045	Anti-p62 (SQSTM1) pAb	
M162-3	Anti-p62 (SQSTM1) (Human) mAb (5F2)	
M162-A48	Anti-p62 (SQSTM1) (Human) mAb -Alexa Fluor®488 mAb (5F2)	
M162-A59	Anti-p62 (SQSTM1) (Human) mAb -Alexa Fluor®594 (5F2)	
M162-A64	Anti-p62 (SQSTM1) (Human) mAb -Alexa Fluor®647 (5F2)	
PM066	Anti-p62 C-terminal pAb	
PM066-7	Anti-p62 C-terminal pAb-HRP-DirecT	
D343-3	Anti-Phospho-p62 (SQSTM1) (Ser403) mAb (4F6)	
D344-3	Anti-Phospho-p62 (SQSTM1) (Ser403) mAb (4C8)	
PM074	Anti-Phospho-p62 (SQSTM1) (Ser351) pAb	
M217-3	Anti-Phospho-p62 (SQSTM1) (Ser351) mAb (5D5)	
PD017	Anti-Becclin 1 pAb	
PM037	Anti-GABARAP pAb	
M135-3	Anti-GABARAP mAb (1F4)	
PM038	Anti-GATE-16 pAb	
PD041	Anti-Atg2A pAb	
PM034	Anti-Atg3 pAb	
M133-3	Anti-Atg3 mAb (3E8)	
M134-3	Anti-Atg4B mAb (9H5)	
PM050	Anti-Atg5 pAb	
M153-3	Anti-Atg5 mAb (4D3)	
PM039	Anti-Atg7 (Human) pAb	
PD042	Anti-Atg9A pAb	
M151-3	Anti-Atg10 (Human) mAb (5A7)	
M154-3	Anti-Atg12 (Human) mAb (6E5)	
PD036	Anti-Atg13 (Human) pAb	
M183-3	Anti-Atg13 mAb (5G4)	
PD026	Anti-Atg14 pAb	
M184-3	Anti-Atg14 (Human) mAb (4H8)	
PM040	Anti-Atg16L pAb	
M150-3	Anti-Atg16L mAb (1F12)	
M160-3	Anti-UVRAG mAb (1H4)	
PD027	Anti-Rubicon (Human) pAb	
M170-3	Anti-Rubicon (Human) mAb (1H6)	
PD037	Anti-Tel2 pAb	
PM072	Anti-VMP1 pAb	
PM076	Anti-Syntaxin-17 (Human) pAb	
M212-3	Anti-Syntaxin-17 (Human) mAb (2F8)	
PM069	Anti-NRF2 pAb	
M200-3	Anti-NRF2 mAb (1F2)	
M224-3	Anti-KEAP1 mAb (KP1)	
M230-3	Anti-Parkin mAb (Par6)	

WB: Western blotting
 IP: Immunoprecipitation
 IC: Immunocytochemistry
 IHC: Immunohistochemistry
 FCM: Flow cytometry
 EM: Immuno-electron microscopy

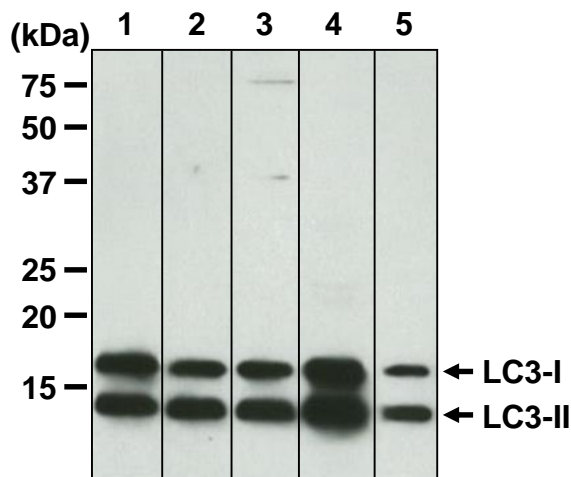
Other related antibodies and kits are also available.
 Please visit our website at <http://ruo.mbl.co.jp/>

Kits

8485	Autophagy Ab Sampler Set
8486	Autophagy Watch
CY-7055	CycLex® Total p62 ELISA Kit
CY-7056	CycLex® Phospho-p62 Ser349 ELISA Kit
CY-7057	CycLex® Phospho-p62 Ser403 ELISA Kit
PM036-PN	Positive control for anti-LC3 antibody

SDS-PAGE & Western blotting

- 1) Load 10 μ L of PM036-PN per lane in a 1-mm-thick SDS-polyacrylamide gel (15% acrylamide) for electrophoresis.
- 2) Blot the protein to a polyvinylidene difluoride (PVDF) membrane at 1 mA/cm² for 1 hr. in a semi-dry transfer system (Transfer Buffer: 25 mM Tris, 190 mM glycine, 20% MeOH). See the manufacturer's manual for precise transfer procedure.
- 3) To reduce nonspecific binding, soak the membrane in 10% skimmed milk (in PBS, pH 7.2) overnight at 4°C.
- 4) Wash the membrane with PBS-T (0.05% Tween-20 in PBS) (5 min. x 3 times).
- 5) Incubate the membrane with primary antibody diluted with 1% skimmed milk (in PBS, pH 7.2) for 1 hr. at room temperature.
- 6) Wash the membrane with PBS-T (5 min. x 3 times).
- 7) Incubate the membrane with 1:10,000 Anti-IgG (Rabbit) pAb-HRP (MBL; code no. 458) or 1:10,000 Anti-IgG (Mouse) pAb-HRP (MBL; code no. 330) diluted with 1% skimmed milk (in PBS, pH 7.2) for 1 hr. at room temperature.
- 8) Wash the membrane with PBS-T (5 min. x 3 times).
- 9) Wipe excess buffer on the membrane, and then incubate it with appropriate chemiluminescence reagent for 1 min. Remove extra reagent from the membrane by dabbing with paper towel, and seal it in plastic wrap.
- 10) Expose to an X-ray film in a dark room for 3 min. Develop the film as usual. The condition for exposure and development may vary.



Western blot analysis of overexpressed human LC3B in 293T

- Lane 1: IB with anti-LC3 pAb (code no. PM036), 1:1,000
- Lane 2: IB with anti-LC3 pAb (code no. PD014), 1:1,000
- Lane 3: IB with anti-LC3 pAb (code no. PM046), 1:1,000
- Lane 4: IB with anti-LC3 mAb (clone: 8E10) (code no. M186-3), 1 μ g/mL
- Lane 5: IB with anti-LC3 mAb (clone: 4E12) (code no. M152-3), 10 μ g/mL