

**For Research Use Only.**  
**Not for use in diagnostic procedures.**

# Anti-Atg2A pAb

<b>CODE No.</b>	PD041
<b>CLONALITY</b>	Polyclonal
<b>ISOTYPE</b>	Rabbit Ig, affinity purified
<b>QUANTITY</b>	100 µL
<b>SOURCE</b>	Purified Ig from rabbit serum
<b>IMMUNOGEN</b>	Human Atg2A, 700-1,400 aa (recombinant)
<b>FORMULATION</b>	PBS containing 50% Glycerol (pH 7.2). No preservative is contained.
<b>STORAGE</b>	This antibody solution is stable for one year from the date of purchase when stored at -20°C.

## APPLICATIONS-CONFIRMED

<u>Western blotting</u>	1:1,000
<u>Immunoprecipitation</u>	5 µL/300 µL of cell extract from 3 x 10 <sup>6</sup> cells
<u>Immunocytochemistry</u>	1:400

## SPECIES CROSS REACTIVITY on WB

Species	Human	Mouse	Rat	Hamster
Cells	293T	MEF	PC12	CHO
Reactivity	+	+	+	+

**Entrez Gene ID** 23130 (Human), 329015 (Mouse), 689688 (Rat), 100758391 (Hamster)

## REFERENCES

- 1) Tamura, N., *et al.* *FEBS Lett.* **591**, 3819-3830 (2017) [WB]
- 2) Tang, Z., *et al.*, *Cell Death Differ.* **24**, 2127-2138 (2017) [WB]
- 3) Corcelle-Termeau, E., *et al.*, *Autophagy* **12**, 833-849 (2016) [WB]
- 4) Velikkakath, A. K., *et al.*, *Mol. Biol. Cell* **23**, 896-909 (2012) [WB, IC]
- 5) Suzuki, K., *et al.*, *Genes Cell* **12**, 209-218 (2007)
- 6) Suzuki, K., *et al.*, *EMBO J.* **20**, 5971-5981 (2001)
- 7) Strømhaug, P. E., *et al.*, *J. Biol. Chem.* **276**, 42422-42435 (2001)
- 8) Shintani, T., *et al.*, *J. Biol. Chem.* **276**, 30452-30460 (2001)
- 9) Wang, C. W., *et al.*, *J. Biol. Chem.* **276**, 30442-30451 (2001)

## RELATED PRODUCTS

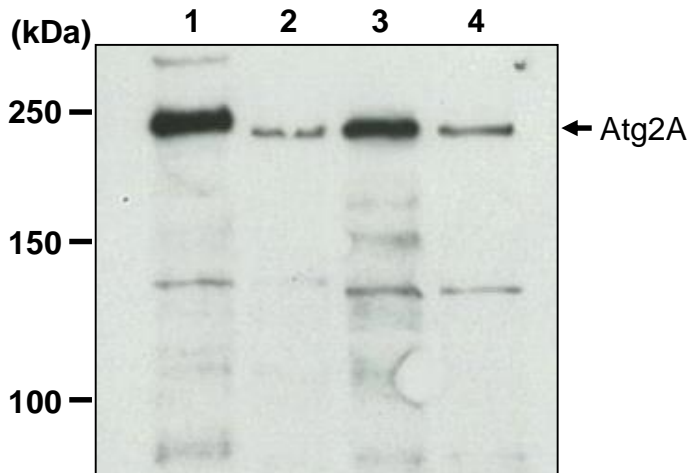
Please visit our website at <https://ruo.mbl.co.jp/>.

The descriptions of the following protocols are examples. Each user should determine the appropriate condition.

### **SDS-PAGE & Western blotting**

- 1) Wash  $1 \times 10^7$  cells 3 times with PBS and suspend them in 1 mL of Laemmli's sample buffer, then sonicate briefly (up to 20 sec.).
- 2) Centrifuge the tube at  $12,000 \times g$  for 5 min. at  $4^\circ\text{C}$  and transfer the supernatant to another tube.
- 3) Boil the samples for 3 min. and centrifuge. Load  $10 \mu\text{L}$  of the sample per lane in a 1-mm-thick SDS-polyacrylamide gel (7.5% acrylamide) for electrophoresis.
- 4) Blot the protein to a polyvinylidene difluoride (PVDF) membrane at  $1 \text{ mA}/\text{cm}^2$  for 1 hr. in a semi-dry transfer system (Transfer Buffer: 25 mM Tris, 190 mM glycine, 20% MeOH). See the manufacturer's manual for precise transfer procedure.
- 5) To reduce nonspecific binding, soak the membrane in 10% skimmed milk (in PBS, pH 7.2) overnight at  $4^\circ\text{C}$ .
- 6) Wash the membrane with PBS-T (0.05% Tween-20 in PBS) (5 min. x 3 times).
- 7) Incubate the membrane with primary antibody diluted with 1% skimmed milk (in PBS, pH 7.2) as suggested in the **APPLICATIONS** for 1 hr. at room temperature. (The concentration of antibody will depend on the conditions.)
- 8) Wash the membrane with PBS-T (5 min. x 3 times).
- 9) Incubate the membrane with 1:10,000 Anti-IgG (Rabbit) pAb-HRP (MBL; code no. 458) diluted with 1% skimmed milk (in PBS, pH 7.2) for 1 hr. at room temperature.
- 10) Wash the membrane with PBS-T (5 min. x 3 times).
- 11) Wipe excess buffer on the membrane, and then incubate it with appropriate chemiluminescence reagent for 1 min. Remove extra reagent from the membrane by dabbing with paper towel, and seal it in plastic wrap.
- 12) Expose to an X-ray film in a dark room for 1 min. Develop the film as usual. The condition for exposure and development may vary.

(Positive controls for Western blotting; 293T, MEF, PC12 and CHO)



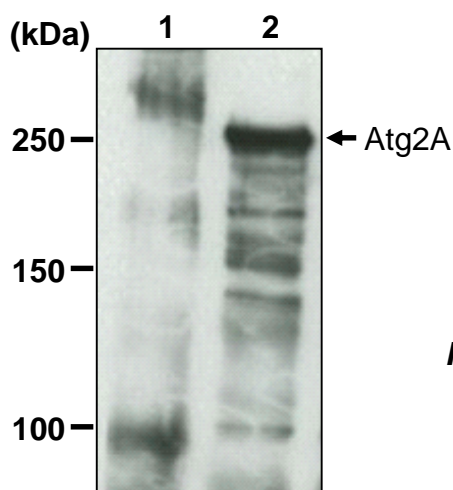
#### **Western blot analysis of Atg2A**

Lane 1: 293T  
Lane 2: MEF  
Lane 3: PC12  
Lane 4: CHO  
Immunoblotted with PD041

### **Immunoprecipitation**

- 1) Wash  $1 \times 10^7$  cells 2 times with PBS and resuspend them with 1 mL of ice-cold Lysis buffer [50 mM Tris-HCl (pH 7.5), 150 mM NaCl, 0.05% NP-40] containing appropriate protease inhibitors, then sonicate briefly (up to 20 sec.).
- 2) Centrifuge the tube at 12,000 x g for 5 min. at 4°C and transfer the supernatant to another tube.
- 3) Mix 20  $\mu$ L of 50% protein A agarose beads slurry resuspended in 300  $\mu$ L of IP buffer [10 mM Tris-HCl (pH 8.0), 500 mM NaCl, 0.1% NP-40] with primary antibody as suggested in the **APPLICATIONS**. Incubate with gentle agitation for 1 hr. at room temperature. (The amount of antibody will depend on the conditions.)
- 4) Centrifuge the tube at 2,500 x g for 10 seconds and discard the supernatant.
- 5) Resuspend the beads with 1 mL of IP buffer.
- 6) Centrifuge the tube at 2,500 x g for 10 seconds and discard the supernatant.
- 7) Repeat steps 4)-6) 2 times.
- 8) Add 300  $\mu$ L of cell lysate (prepared sample from step 2)), then incubate with gentle agitation for 1 hr. at room temperature.
- 9) Wash the beads 5 times with 1 mL of Lysis buffer.
- 10) Resuspend the beads in 20  $\mu$ L of Laemmli's sample buffer, boil for 3 min. and centrifuge.
- 11) Load 10  $\mu$ L of the sample per lane in a 1-mm-thick SDS-polyacrylamide gel (7.5% acrylamide) for electrophoresis.
- 12) Blot the protein to a polyvinylidene difluoride (PVDF) membrane at 1 mA/cm<sup>2</sup> for 1 hr. in a semi-dry transfer system (Transfer Buffer: 25 mM Tris, 190 mM glycine, 20% MeOH). See the manufacturer's manual for precise transfer procedure.
- 13) To reduce nonspecific binding, soak the membrane in 10% skimmed milk (in PBS, pH 7.2) overnight at 4°C.
- 14) Wash the membrane with PBS-T (0.05% Tween-20 in PBS) (5 min. x 3 times).
- 15) Incubate the membrane with primary antibody diluted with 1% skimmed milk (in PBS, pH 7.2) as suggested in the **APPLICATIONS** for 1 hr. at room temperature. (The concentration of antibody will depend on the conditions.)
- 16) Wash the membrane with PBS-T (5 min. x 3 times).
- 17) Incubate the membrane with 1:10,000 Anti-IgG (Rabbit) pAb-HRP (MBL; code no. 458) diluted with 1% skimmed milk (in PBS, pH 7.2) for 1 hr. at room temperature.
- 18) Wash the membrane with PBS-T (5 min. x 3 times).
- 19) Wipe excess buffer on the membrane, and then incubate it with appropriate chemiluminescence reagent for 1 min.
- 20) Remove extra reagent from the membrane by dabbing with paper towel, and seal it in plastic wrap.
- 21) Expose to an X-ray film in a dark room for 1 min. Develop the film as usual. The condition for exposure and development may vary.

(Positive control for Immunoprecipitation; 293T)



#### ***Immunoprecipitation of Atg2A from 293T***

Lane 1: IP with Normal Rabbit IgG (PM035)

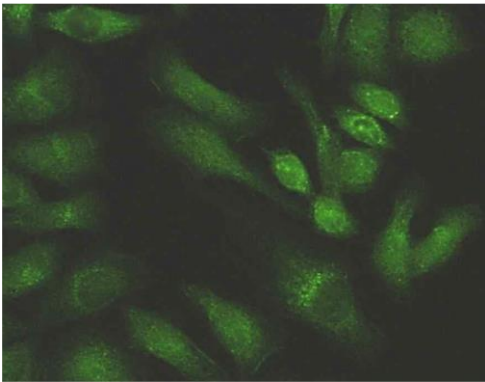
Lane 2: IP with PD041

Immunoblotted with PD041

### **Immunocytochemistry**

- 1) Spread the cells on a glass slide, then incubate in a CO<sub>2</sub> incubator for one night.
- 2) Remove the culture supernatant by careful aspiration.
- 3) To obtain serum-starved conditions, culture the cells with Hanks' balanced salt solution or DMEM for 2-4 hr. at 37°C.
- 4) Fix the cells by immersing the slide in 4% paraformaldehyde (PFA)/PBS for 10 min. at room temperature (20~25°C).
- 5) Wash the slide 2 times with PBS.
- 6) Immerse the slide in 100 µg/mL of Digitonin in PBS for 10 min. at room temperature.
- 7) Wash the slide 2 times with PBS.
- 8) Add 200 µL of the primary antibody diluted with PBS as suggested in the **APPLICATIONS** onto the cells and incubate for 1 hr. at room temperature. (Optimization of antibody concentration or incubation condition is recommended if necessary.)
- 9) Wash the slide 2 times with PBS.
- 10) Add 200 µL of 1:500 anti-IgG (Rabbit)-Alexa Fluor<sup>®</sup>488 (Invitrogen; code no. A11008) diluted with PBS onto the cells. Incubate for 30 min. at room temperature. Keep out light by aluminum foil.
- 11) Wash the slide 2 times with PBS.
- 12) Promptly add mounting medium onto the slide, then put a cover slip on it.

(Positive control for Immunocytochemistry; starved HeLa)



***Immunocytochemical detection of Atg2A in starved HeLa***