

Anti-GST-tag mAb-HRP-Direct

CODE No.	M209-7
CLONALITY	Monoclonal
CLONE	GT5
ISOTYPE	Mouse IgG1 κ
QUANTITY	50 μ L
SOURCE	Purified IgG from hybridoma supernatant
IMMUNOGEN	Recombinant GST protein
FORMULATION	PBS/Preservative/Stabilizer
STORAGE	This antibody solution is stable for one year from the date of purchase when stored at 4°C.

APPLICATION-CONFIRMED

Western blotting 1:5,000

RELATED PRODUCTS

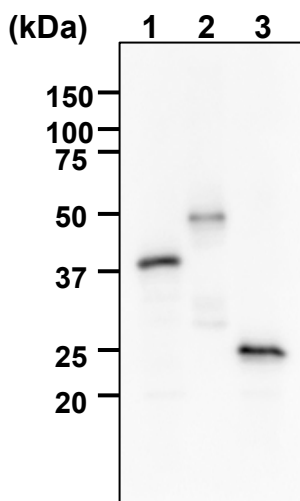
Please visit our website at <https://ruo.mbl.co.jp/>.

For more information, please visit our web site <https://ruo.mbl.co.jp/>.

The descriptions of the following protocols are examples. Each user should determine the appropriate condition.

SDS-PAGE & Western blotting

- 1) Mix the sample with equal volume of Laemmili's sample buffer.
- 2) Boil the sample for 2-3 min. and centrifuge. Load the sample per lane in a 1-mm-thick SDS-polyacrylamide gel (12.5% acrylamide) for electrophoresis.
- 3) Blot the protein to a polyvinylidene difluoride (PVDF) membrane at 1 mA/cm² for 1 hr. in a semi-dry transfer system (Transfer Buffer: 25 mM Tris, 190 mM glycine, 20% Methanol). See the manufacturer's manual for precise transfer procedure.
- 4) To reduce nonspecific binding, soak the membrane in 10% skimmed milk (in PBS, pH 7.2) for 1 hr. at room temperature.
- 5) Wash the membrane with PBS-T [0.05% Tween-20 in PBS] (5 min. x 3 times).
- 6) Incubate the membrane with primary antibody diluted with 1% skimmed milk (in PBS, pH 7.2) as suggested in the **APPLICATIONS** for 1 hr. at room temperature. (The concentration of antibody will depend on the conditions.)
- 7) Wash the membrane with PBS-T (5 min. x 3 times).
- 8) Wipe excess buffer on the membrane, and then incubate it with appropriate chemiluminescence reagent for 1 min. Remove extra reagent from the membrane by dabbing with paper towel, and seal it in plastic wrap.
- 9) Expose to an X-ray film in a dark room for 1 min. Develop the film as usual. The condition for exposure and development may vary.



Western blot analysis of GST-tagged proteins

Lane 1: GST-hLC3 (pGEX-4T-1), 20 ng
Lane 2: GST-tagged protein X (pGEX-6P-1), 20 ng
Lane 3: GST (pGEX-6P-3), 20 ng

Immunoblotted with Anti-GST-tag mAb-HRP-DirecT (M209-7)