

**For Research Use Only.
Not for use in diagnostic procedures.**



Human IgG2 isotype control chimeric mAb

CODE No.	M195-3
CLONALITY	Monoclonal
CLONE	2E12G2-18
ISOTYPE	Human IgG2
QUANTITY	100 μ L, 1 mg/mL
SOURCE	Purified IgG from transfectant
IMMUNOGEN	KLH, this antibody consist both variable region of mouse IgG1 isotype control, clone 2E12 (MBL; code no. M075-3) and constant region of human IgG2
FORMURATION	PBS containing 50% Glycerol (pH 7.2). No preservative is contained.
STORAGE	This antibody solution is stable for one year from the date of purchase when stored at -20°C.
APPLICATIONS-CONFIRMED	
	<u>Flow cytometry</u>



RELATED PRODUCTS

Chimeric antibody

M194-3 Human IgG1 isotype control (2E12G1-2)

Functional grade antibody

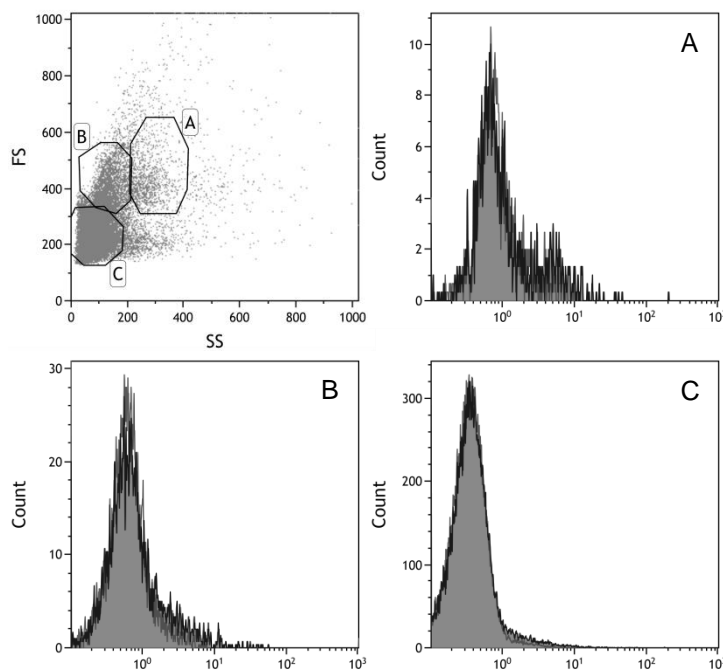
M075-3M2 Mouse IgG1 isotype control FG (2E12)
M076-3M2 Mouse IgG2a isotype control FG (6H3)
M077-3M2 Mouse IgG2b isotype control FG (3D12)
M078-3M2 Mouse IgG3 isotype control FG (6A3)
M080-3M2 Rat IgG1 isotype control FG (1H5)
M081-3M2 Rat IgG2a isotype control FG (2H3)
M090-3M2 Rat IgG2b isotype control FG (3G8)
M082-3M2 Rat IgG2c isotype control FG (6E12)

Purified antibody

M075-3 Mouse IgG1 isotype control (2E12)
M075-4 Mouse IgG1 isotype control-FITC (2E12)
M075-5 Mouse IgG1 isotype control-PE (2E12)
M075-8 Mouse IgG1 isotype control-Agarose (2E12)
M075-A48 Mouse IgG1 isotype control-Alexa Fluor[®] 488 (2E12)
M075-A64 Mouse IgG1 isotype control-Alexa Fluor[®] 647 (2E12)
M076-3 Mouse IgG2a isotype control (6H3)
M076-4 Mouse IgG2a isotype control-FITC (6H3)
M076-5 Mouse IgG2a isotype control-PE (6H3)
M076-A48 Mouse IgG2a isotype control-Alexa Fluor[®] 488 (6H3)
M076-A64 Mouse IgG2a isotype control-Alexa Fluor[®] 647 (6H3)
M077-3 Mouse IgG2b isotype control (3D12)
M077-4 Mouse IgG2b isotype control-FITC (3D12)
M077-5 Mouse IgG2b isotype control-PE (3D12)
M077-A48 Mouse IgG2b isotype control-Alexa Fluor[®] 488 (3D12)
M077-A64 Mouse IgG2b isotype control-Alexa Fluor[®] 647 (3D12)
M078-3 Mouse IgG3 isotype control (6A3)
M078-4 Mouse IgG3 isotype control-FITC (6A3)
M079-3 Mouse IgM isotype control (7E10)
M080-3 Rat IgG1 isotype control (1H5)
M080-4 Rat IgG1 isotype control-FITC (1H5)
M080-5 Rat IgG1 isotype control-PE (1H5)
M080-A48 Rat IgG1 isotype control-Alexa Fluor[®] 488 (1H5)
M081-3 Rat IgG2a isotype control (2H3)
M081-4 Rat IgG2a isotype control-FITC (2H3)
M081-5 Rat IgG2a isotype control-PE (2H3)
M081-8 Rat IgG2a isotype control-Agarose (2H3)
M081-A48 Rat IgG2a isotype control-Alexa Fluor[®] 488 (2H3)
M090-3 Rat IgG2b isotype control (3G8)
M090-4 Rat IgG2b isotype control-FITC (3G8)
M090-5 Rat IgG2b isotype control-PE (3G8)
M090-A48 Rat IgG2b isotype control-Alexa Fluor[®] 488 (3G8)
M082-3 Rat IgG2c isotype control (6E12)
M082-4 Rat IgG2c isotype control-FITC (6E12)
M189-3 Hamster IgG isotype control (ttko)
PM035 Normal Rabbit IgG (polyclonal)
PM035-8 Normal Rabbit IgG-Agarose (polyclonal)
PM067 Normal Guinea Pig IgG (polyclonal)

Flow cytometric analysis

- 1) Wash the cells (2.5×10^5 cells/sample) 1 time with 1 mL of washing buffer (0.5% BSA, 2 mM EDTA in PBS).
- 2) Add 20 μ L of 10 μ g/mL anti-CD16/CD32 (mouse) (Becton Dickinson; code no. 553141) to the cell pellet after tapping. Mix well and incubate for 10 min. at 4°C.
- 3) Add 50 μ L of 10 μ g/mL the primary antibody diluted in the washing buffer Mix well and incubate for 30 min. at 4°C.
- 4) Wash the cells 2 times with 1 mL of washing buffer.
- 5) Add 20 μ L of 1:100 anti-IgG (Human)-FITC (MBL; code no. 214) diluted with the washing buffer. Mix well and incubate for 15 min. at room temperature.
- 6) Wash the cells 2 times with 1 mL of washing buffer.
- 7) Resuspend the cells with 500 μ L of the washing buffer and analyze by a flow cytometer.



Flow cytometric analysis of human IgG2 isotype control chimeric mAb on mouse splenocyte

Closed: isotype control (10 μ g/mL)

Open: unstained