

MONOCLONAL ANTIBODY

# Anti-Nuf2 (Human) mAb

Code No.	Clone	Subclass	Quantity	Concentration
M146-3	4H9	Mouse IgG2a	100 µL	1 mg/mL

**BACKGROUND:** Nuf2, a widely conserved protein in eukaryote, compose the Ndc80 complex with NDC80/HEC1, SPC24 and SPC25. The Ndc80 complex is a constituent of the outer plate of kinetochore and acts to establish kinetochore-spindle connection at centromere for chromosome segregation in mitosis. Nuf2 localizes to kinetochores from late prophase to anaphase.

**SOURCE:** This antibody was purified from hybridoma (clone 4H9) supernatant using protein A agarose. This hybridoma was established by fusion of mouse myeloma cell P3U1 with C3H mouse lymphocyte immunized with the recombinant full-length human Nuf2 (1-464 aa).

**FORMULATION:** 100 µg IgG in 100 µL volume of PBS containing 50% glycerol, pH 7.2. No preservative is contained.

**STORAGE:** This antibody solution is stable for one year from the date of purchase when stored at -20°C.

**REACTIVITY:** This antibody reacts with Nuf2 (54 kDa) on Western blotting and Immunoprecipitation.

## APPLICATIONS:

Western blotting: 10 µg/mL for chemiluminescence detection system

Immunoprecipitation: Not recommended

Immunohistochemistry: Not tested

Immunocytochemistry: Not recommended

Flow cytometry: Not tested

Detailed procedure is provided in the following **PROTOCOLS**.

## SPECIES CROSS REACTIVITY:

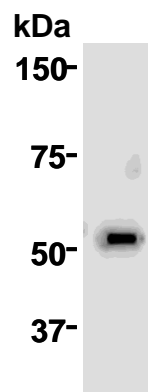
Species	Human	Mouse	Rat
Cell	293T	Not tested	Not tested
Reactivity on WB	+		

## INTENDED USE:

For Research Use Only. Not for use in diagnostic procedures.

## REFERENCES:

- 1) Ngo, B., *et al.*, *J. Biol. Chem.* **288**, 34403-34413 (2013) [WB]
- 2) Wu, G., *et al.*, *Mol. Cell Biol.* **20**, 4686-4695 (2009) [WB, IP]
- 3) Ciferri, C., *et al.*, *J. Biol. Chem.* **280**, 29088-29095 (2005)
- 4) Wigge, P. A., *et al.*, *J. Cell Biol.* **152**, 349-360 (2001)
- 5) Janke, C., *et al.*, *EMBO J.* **20**, 777-791 (2001)
- 6) Osborne, M. A., *et al.*, *J. Cell Biol.* **125**, 853-866 (1994)



**Western blot analysis of Nuf2 expression in 293T using M146-3.**

## PROTOCOLS:

### SDS-PAGE & Western Blotting

- 1) Wash the  $5 \times 10^6$  cells 3 times with PBS and suspend with 500 µL of Laemmli's sample buffer.
- 2) Boil the samples for 2 minutes and centrifuge. Load 5 µL of the sample per lane in a 1 mm thick SDS-polyacrylamide gel for electrophoresis.
- 3) Blot the protein to a polyvinylidene difluoride (PVDF) membrane at 1 mA/cm<sup>2</sup> for 1 hour in a semi-dry transfer system (Transfer Buffer: 25 mM Tris, 190 mM glycine, 20% MeOH). See the manufacture's manual for precise transfer procedure.
- 4) To reduce nonspecific binding, soak the membrane in 5% skimmed milk (in PBS, pH 7.2) for 1 hour at room temperature, or overnight at 4°C.
- 5) Incubate the membrane with primary antibody diluted with PBS, pH 7.2 containing 1% BSA, 0.1% Tween-20 as suggest in the **APPLICATIONS** for 1 hour at room temperature. (The concentration of antibody will depend on condition.)
- 6) Wash the membrane with PBS-T [0.05% Tween-20 in PBS] (5 minutes x 3 times).
- 7) Incubate the membrane with 1:5,000 of Anti-IgG (Mouse) pAb-HRP (MBL; code no. 330) diluted with 1% BSA (in

PBS, pH 7.2) for 1 hour at room temperature.

- 8) Wash the membrane with PBS-T (10 minutes x 3 times).
- 9) Wipe excess buffer on the membrane, then incubate it with appropriate chemiluminescence reagent for 2 minute.
- 10) Remove extra reagent from the membrane by dabbing with paper towel, and seal it in plastic wrap.
- 11) Expose to an X-ray film in a dark room for 3 minutes.
- 12) Develop the film as usual. The condition for exposure and development may vary.

(Positive control for Western blotting; 293T)

**RELATED PRODUCTS:**

- D115-3 Anti-CENP-A (Human) mAb (3-19)
- PD030 Anti-CENP-C (Human) pAb (polyclonal)
- K0171-3 Anti-CENP-E (Human) mAb (1H12)
- PD031 Anti-CENP-H (Human) pAb (polyclonal)
- PD032 Anti-CENP-I (hMis6) (Human) pAb (polyclonal)
- D282-3 Anti-CENP-K (ICEN37) (Human) mAb (46F1)
- PD018 Anti-CENP-K (ICEN37) (Human) pAb (polyclonal)
- D283-3 Anti-CENP-L (ICEN33) (Human) mAb (27E10)
- D284-3 Anti-CENP-M (ICEN39) (Human) mAb (23F6)
- D285-3 Anti-CENP-N (ICEN32) (Human) mAb (22F4)
- D286-3 Anti-CENP-T (ICEN22) (Human) mAb (42F10)
- PD019 Anti-CENP-50 (Human) pAb (polyclonal)
- PD020 Anti-CENP-O (Chicken) pAb (polyclonal)
- M076-3 Mouse IgG2a (isotype control) (6H3)