

MONOCLONAL ANTIBODY

Rat IgG2a (isotype control)-FITC

Code No.	Clone	Subclass	Quantity	Concentration
M081-4	2H3	Rat IgG2a κ	1 mL	50 $\mu\text{g/mL}$

SOURCE: This antibody was purified from hybridoma (clone 2H3) supernatant using protein G agarose. This hybridoma was established by fusion of mouse myeloma cell P3U1 with rat lymph nodes immunized with KLH.

FORMULATION: 50 μg IgG in 1 mL volume of PBS containing 1% BSA and 0.09% NaN_3 .

*Azide may react with copper or lead in plumbing system to form explosive metal azides. Therefore, always flush plenty of water when disposing materials containing azide into drain.

STORAGE: This antibody solution is stable for one year from the date of purchase when stored at 4°C.

REACTIVITY: No specific binding detected on human peripheral blood leukocytes.

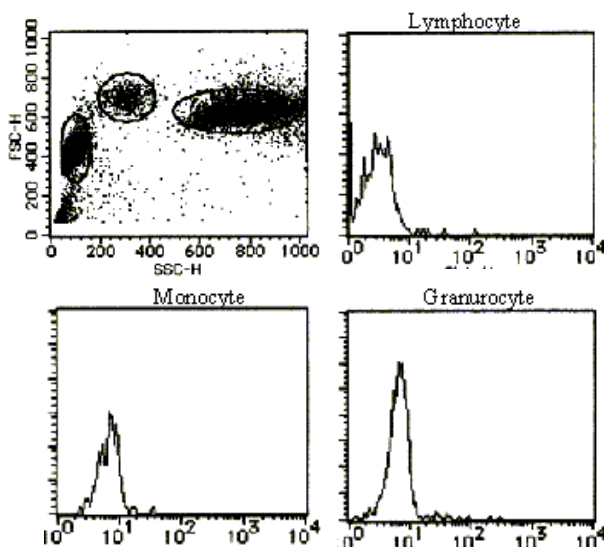
APPLICATION:

Flow cytometry: This antibody can be used as a negative isotypic control. The concentration will depend on condition.

Detailed procedure is provided in the following **PROTOCOLS.**

INTENDED USE:

For Research Use Only. Not for use in diagnostic procedures.



Flow cytometric analysis of Rat IgG2a (isotype control)-FITC (M081-4) reactivity on human peripheral blood leukocytes.

PROTOCOLS:

Flow cytometric analysis for floating cells

We usually use Fisher tubes or equivalents as reaction tubes for all step described below.

- 1) Wash the cells 3 times with washing buffer [PBS containing 2% fetal calf serum (FCS) and 0.09% NaN_3].
- 2) Resuspend the cells with washing buffer (5×10^6 cells/mL).
- 3) Add 50 μL of the cell suspension into each tube, and centrifuge at 500 x g for 1 minute at room temperature (20~25°C). Remove supernatant by careful aspiration.
- 4) Add 10 μL of Clear Back (human Fc receptor blocking reagent, MBL; code no. MTG-001) to the cell pellet after tapping. Mix well and incubate for 5 minutes at room temperature.
- 5) Add 40 μL of Rat IgG2a (isotype control)-FITC (M081-4) (10-20 $\mu\text{g/mL}$) diluted with the washing buffer. Mix well and incubate for 30 minutes at room temperature.
- 6) Add 1 mL of the washing buffer followed by centrifugation at 500 x g for 1 minute at room temperature. Remove supernatant by careful aspiration.
- 7) Resuspend the cells with 500 μL of the washing buffer and analyze by a flow cytometer.

Flow cytometric analysis for whole blood cells

We usually use Fisher tubes or equivalents as reaction tubes for all step described below.

- 1) Add 50 μL of Rat IgG2a (isotype control)-FITC (M081-4) (10-20 $\mu\text{g/mL}$) diluted with the washing buffer [PBS containing 2% fetal calf serum (FCS) and 0.09% NaN_3] into each tube.
- 2) Add 50 μL of whole blood into each tube. Mix well, and incubate for 30 minutes at room temperature (20~25°C).
- 3) Add 1 mL of washing buffer followed by centrifugation at 500 x g for 1 minute at room temperature. Remove supernatant by careful aspiration.
- 4) Lyse with OptiLyse C (for analysis on Beckman Coulter instruments) or OptiLyse B (for analysis on BD instruments), using the procedure recommended in the respective package inserts.
- 5) Add 1 mL of H_2O to each tube and incubate for 10 minutes at room temperature.
- 6) Centrifuge at 500 x g for 1 minute at room temperature. Remove supernatant by careful aspiration.
- 7) Add 1 mL of washing buffer followed by centrifugation at 500 x g for 1 minute at room temperature. Remove supernatant by careful aspiration.
- 8) Resuspend the cells with 500 μL of the washing buffer and analyze by a flow cytometer.

RELATED PRODUCTS:

Functional grade antibodies

M080-3M2 Rat IgG1 (isotype control) (1H5)
M081-3M2 Rat IgG2a (isotype control) (2H3)
M090-3M2 Rat IgG2b (isotype control) (3G8)
M082-3M2 Rat IgG2c (isotype control) (6E12)
M075-3M2 Mouse IgG1 (isotype control) (2E12)
M076-3M2 Mouse IgG2a (isotype control) (6H3)
M077-3M2 Mouse IgG2b (isotype control) (3D12)

Purified antibodies

M080-3 Rat IgG1 (isotype control) (1H5)
M080-4 Rat IgG1 (isotype control)-FITC (1H5)
M080-5 Rat IgG1 (isotype control)-PE (1H5)
M080-A48 Rat IgG1 (isotype control)-Alexa Fluor[®] 488 (1H5)
M080-A64 Rat IgG1 (isotype control)-Alexa Fluor[®] 647 (1H5)
M081-3 Rat IgG2a (isotype control) (2H3)
M081-5 Rat IgG2a (isotype control)-PE (2H3)
M081-8 Rat IgG2a (isotype control)-Agarose (2H3)
M081-11 Rat IgG2a (isotype control)-Magnetic Beads (2H3)
M081-A48 Rat IgG2a (isotype control)-Alexa Fluor[®] 488 (2H3)
M081-A64 Rat IgG2a (isotype control)-Alexa Fluor[®] 647 (2H3)
M090-3 Rat IgG2b (isotype control) (3G8)
M090-4 Rat IgG2b (isotype control)-FITC (3G8)
M090-5 Rat IgG2b (isotype control)-PE (3G8)
M090-A48 Rat IgG2b (isotype control)-Alexa Fluor[®] 488 (3G8)
M090-A64 Rat IgG2b (isotype control)-Alexa Fluor[®] 647 (3G8)
M082-3 Rat IgG2c (isotype control) (6E12)
M082-4 Rat IgG2c (isotype control)-FITC (6E12)
M075-3 Mouse IgG1 (isotype control) (2E12)
M075-4 Mouse IgG1 (isotype control)-FITC (2E12)
M075-5 Mouse IgG1 (isotype control)-PE (2E12)
M075-6 Mouse IgG1 (isotype control)-Biotin (2E12)
M075-8 Mouse IgG1 (isotype control)-Agarose (2E12)
M075-11 Mouse IgG1 (isotype control)-Magnetic Beads (2E12)
M075-12 Mouse IgG1 (isotype control)-ALP (2E12)
M075-A48 Mouse IgG1 (isotype control)-Alexa Fluor[®] 488 (2E12)
M075-A64 Mouse IgG1 (isotype control)-Alexa Fluor[®] 647 (2E12)
M076-3 Mouse IgG2a (isotype control) (6H3)
M076-4 Mouse IgG2a (isotype control)-FITC (6H3)
M076-5 Mouse IgG2a (isotype control)-PE (6H3)
M076-6 Mouse IgG2a (isotype control)-Biotin (6H3)
M076-11 Mouse IgG2a (isotype control)-Magnetic Beads (6H3)
M076-12 Mouse IgG2a (isotype control)-ALP (6H3)
M076-A48 Mouse IgG2a (isotype control)-Alexa Fluor[®] 488 (6H3)
M076-A64 Mouse IgG2a (isotype control)-Alexa Fluor[®] 647 (6H3)
M077-3 Mouse IgG2b (isotype control) (3D12)
M077-4 Mouse IgG2b (isotype control)-FITC (3D12)
M077-5 Mouse IgG2b isotype control-PE (3D12)
M077-6 Mouse IgG2b isotype control-Biotin (3D12)
M077-11 Mouse IgG2b (isotype control)-Magnetic Beads (3D12)
M077-12 Mouse IgG2b isotype control-ALP (3D12)
M077-A48 Mouse IgG2b (isotype control)-Alexa Fluor[®] 488 (3D12)
M077-A64 Mouse IgG2b (isotype control)-Alexa Fluor[®] 647 (3D12)
M078-3 Mouse IgG3 (isotype control) (6A3)
M078-4 Mouse IgG3 (isotype control)-FITC (6A3)
M078-6 Mouse IgG3 (isotype control)-Biotin (6A3)
M079-3 Mouse IgM (isotype control) (7E10)
M189-3 Syrian Hamster IgG (isotype control) (ttko)

M199-3 Armenian Hamster IgG (isotype control) (ttko2)
M194-3 Human IgG1 isotype control chimeric mAb (2E12G1-2)
M195-3 Human IgG2 isotype control chimeric mAb (2E12G2-18)
PM035 Normal Rabbit IgG (polyclonal)
PM035-8 Normal Rabbit IgG-Agarose (polyclonal)
PM067 Normal Guinea Pig IgG (polyclonal)
PM084 Normal Chicken IgY (polyclonal)
PM084-4 Normal Chicken IgY-FITC (polyclonal)
PM084-5 Normal Chicken IgY-PE (polyclonal)
PM089 Normal Sheep IgG (polyclonal)
PM094 Normal Goat IgG (polyclonal)

Other related antibodies and kits are also available.
Please visit our web site at <http://ruo.mbl.co.jp>