

**For Research Use Only.  
Not for use in diagnostic procedures.**



# Mouse IgG3 (isotype control)-Biotin

<b>CODE No.</b>	M078-6
<b>CLONALITY</b>	Monoclonal
<b>CLONE</b>	6A3
<b>ISOTYPE</b>	Mouse IgG3
<b>QUANTITY</b>	50 µL, 1 mg/mL
<b>SOURCE</b>	Purified IgG from hybridoma supernatant
<b>IMMUNOGEN</b>	KLH
<b>REACTIVITY</b>	No specific binding is detected on Flow cytometry.
<b>FORMURATION</b>	PBS containing 1% BSA and 0.1% ProClin 950
<b>STORAGE</b>	This antibody solution is stable for one year from the date of purchase when stored at 4°C.

## **APPLICATION-CONFIRMED**

### Flow cytometry

This antibody can be used as a negative control.  
The concentration will depend on the conditions.

For more information, please visit our web site <http://ruo.mbl.co.jp/>



## RELATED PRODUCTS

### Purified antibodies

M075-3 Mouse IgG1 (isotype control) (2E12)  
M075-4 Mouse IgG1 (isotype control)-FITC (2E12)  
M075-5 Mouse IgG1 (isotype control)-PE (2E12)  
M075-6 Mouse IgG1 (isotype control)-Biotin (2E12)  
M075-A48 Mouse IgG1 (isotype control)-Alexa Fluor<sup>®</sup> 488 (2E12)  
M075-A64 Mouse IgG1 (isotype control)-Alexa Fluor<sup>®</sup> 647 (2E12)  
M075-8 Mouse IgG1 (isotype control)-Agarose (2E12)  
M076-3 Mouse IgG2a (isotype control) (6H3)  
M076-4 Mouse IgG2a (isotype control)-FITC (6H3)  
M076-5 Mouse IgG2a (isotype control)-PE (6H3)  
M076-6 Mouse IgG2a (isotype control)-Biotin (6H3)  
M076-A48 Mouse IgG2a (isotype control)-Alexa Fluor<sup>®</sup> 488 (6H3)  
M076-A64 Mouse IgG2a (isotype control)-Alexa Fluor<sup>®</sup> 647 (6H3)  
M077-3 Mouse IgG2b (isotype control) (3D12)  
M077-4 Mouse IgG2b (isotype control)-FITC (3D12)  
M077-5 Mouse IgG2b (isotype control)-PE (3D12)  
M077-6 Mouse IgG2b (isotype control)-Biotin (3D12)  
M077-A48 Mouse IgG2b (isotype control)-Alexa Fluor<sup>®</sup> 488 (3D12)  
M077-A64 Mouse IgG2b (isotype control)-Alexa Fluor<sup>®</sup> 647 (3D12)  
M078-3 Mouse IgG3 (isotype control) (6A3)  
M078-4 Mouse IgG3 (isotype control)-FITC (6A3)  
M078-6 Mouse IgG3 (isotype control)-Biotin (6A3)  
M079-3 Mouse IgM (isotype control) (7E10)  
M080-3 Rat IgG1 (isotype control) (1H5)  
M080-4 Rat IgG1 (isotype control)-FITC (1H5)  
M080-5 Rat IgG1 (isotype control)-PE (1H5)  
M080-A48 Rat IgG1 (isotype control)-Alexa Fluor<sup>®</sup> 488 (1H5)  
M080-A64 Rat IgG1 (isotype control)-Alexa Fluor<sup>®</sup> 647 (1H5)  
M081-3 Rat IgG2a (isotype control) (2H3)  
M081-4 Rat IgG2a (isotype control)-FITC (2H3)  
M081-5 Rat IgG2a (isotype control)-PE (2H3)  
M081-A48 Rat IgG2a (isotype control)-Alexa Fluor<sup>®</sup> 488 (2H3)  
M081-A64 Rat IgG2a (isotype control)-Alexa Fluor<sup>®</sup> 647 (2H3)  
M081-8 Rat IgG2a (isotype control)-Agarose (2H3)  
M082-3 Rat IgG2c (isotype control) (6E12)  
M082-4 Rat IgG2c (isotype control)-FITC (6E12)  
M090-3 Rat IgG2b (isotype control) (3G8)  
M090-4 Rat IgG2b (isotype control)-FITC (3G8)  
M090-5 Rat IgG2b (isotype control)-PE (3G8)  
M090-A48 Rat IgG2b (isotype control)-Alexa Fluor<sup>®</sup> 488 (3G8)  
M090-A64 Rat IgG2b (isotype control)-Alexa Fluor<sup>®</sup> 647 (3G8)  
PM035 Normal Rabbit IgG (polyclonal)  
PM035-8 Normal Rabbit IgG-Agarose (polyclonal)  
PM067 Normal Guinea Pig IgG (polyclonal)  
M189-3 Syrian Hamster IgG (isotype control)  
M199-3 Armenian Hamster IgG (isotype control)  
PM084 Normal Chicken IgY (polyclonal)  
PM084-4 Normal Chicken IgY-FITC (polyclonal)  
PM089 Normal Sheep IgG (polyclonal)  
PM094 Normal Goat IgG (polyclonal)

### Smart-IP series

3190 Magnetic Rack  
M075-11 Mouse IgG1 (isotype control)-Magnetic Beads (2E12)  
M076-11 Mouse IgG2a (isotype control)-Magnetic Beads (6H3)  
M077-11 Mouse IgG2b (isotype control)-Magnetic Beads (3D12)  
M081-11 Rat IgG2a (isotype control)-Magnetic Beads (2H3)  
M180-11 Anti-HA-tag mAb-Magnetic Beads (TANA2)

M132-11 Anti-HA-tag mAb-Magnetic Beads (5D8)  
M185-11 Anti-DDDDK-tag mAb-Magnetic Beads (FLA-1)  
M047-11 Anti-Myc-tag mAb-Magnetic Beads (PL14)  
D291-11 Anti-His-tag mAb-Magnetic Beads (OGHis)  
D153-11 Anti-GFP mAb-Magnetic Beads (RQ2)  
M165-11 Anti-RFP mAb-Magnetic Beads (3G5)  
M198-9 Anti-E-tag mAb-Magnetic beads (21D11)  
M167-11 Anti-V5-tag mAb-Magnetic Beads (1H6)  
D058-9 Anti-Multi Ubiquitin mAb-Magnetic beads (FK2)  
M180-10 Anti-HA-tag mAb-Magnetic Agarose (TANA2)  
M132-10 Anti-HA-tag mAb-Magnetic Agarose (5D8)  
M185-10 Anti-DDDDK-tag mAb-Magnetic Agarose (FLA-1)  
M047-10 Anti-Myc-tag mAb-Magnetic Agarose (PL14)  
D291-10 Anti-His-tag mAb-Magnetic Agarose (OGHis)  
D153-10 Anti-GFP mAb-Magnetic Agarose (RQ2)  
M165-10 Anti-RFP mAb-Magnetic Agarose (3G5)  
M167-10 Anti-V5-tag mAb-Magnetic Agarose (1H6)  
M198-10 Anti-E-tag mAb-Magnetic Agarose (21D11)  
M201-10 Anti-Phosphotyrosine mAb-Magnetic Agarose (PT4)

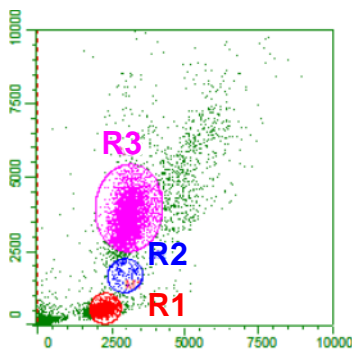
### Functional grade antibodies

M075-3M2 Mouse IgG1 (isotype control) (2E12)  
M076-3M2 Mouse IgG2a (isotype control) (6H3)  
M077-3M2 Mouse IgG2b (isotype control) (3D12)  
M078-3M2 Mouse IgG3 (isotype control) (6A3)  
M079-3M2 Mouse IgM (isotype control) (7E10)  
M080-3M2 Rat IgG1 (isotype control) (1H5)  
M081-3M2 Rat IgG2a (isotype control) (2H3)  
M090-3M2 Rat IgG2b (isotype control) (3G8)

Other related antibodies and kits are also available.  
Please visit our website at <http://ruo.mbl.co.jp/>

**Flow cytometric analysis for whole blood cells**

- 1) Dispense 100  $\mu$ L of whole blood into each tube.
- 2) Add 50  $\mu$ L of 1, 5 or 10  $\mu$ g/mL Mouse IgG3 (isotype control)-Biotin (M078-6) diluted with washing buffer [PBS containing 2% fetal calf serum (FCS)]. Mix well and incubate for 20 min. at room temperature.
- 3) Wash the cells 1 time with 1 mL of washing buffer.
- 4) Add FITC conjugated Streptavidin diluted with washing buffer. Mix well and incubate for 20 min. at room temperature.
- 5) Wash the cells 1 time with 1 mL of washing buffer.
- 6) Add 100  $\mu$ L of OptiLyse B (for analysis on BD instruments, Beckman Coulter; code no. IM-1400). Mix well and incubate for 10 min. at room temperature.
- 7) Add 1 mL of distilled water to each tube and incubate for 10 min. at room temperature.
- 8) Centrifuge at 500 x g for 1 min. at room temperature. Remove supernatant by careful aspiration.
- 9) Resuspend the cells with 500  $\mu$ L of the washing buffer and analyze by a flow cytometer.

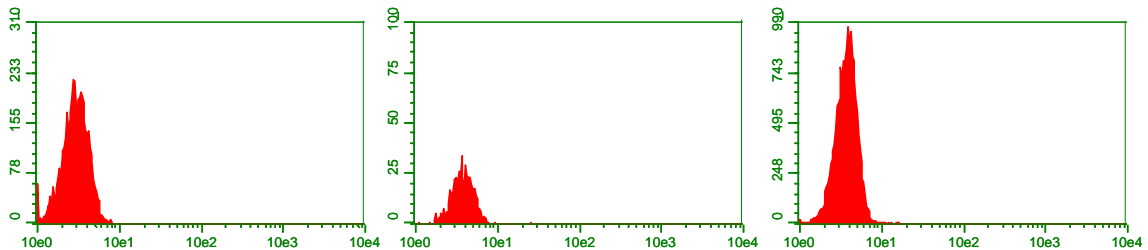


**R1: Lymphocyte**

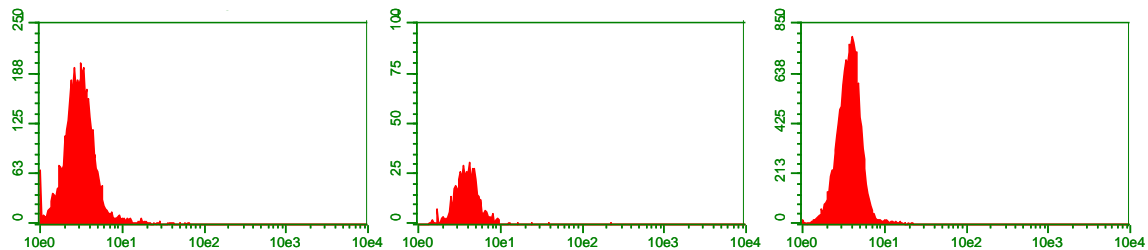
**R2: Monocyte**

**R3: Granulocyte**

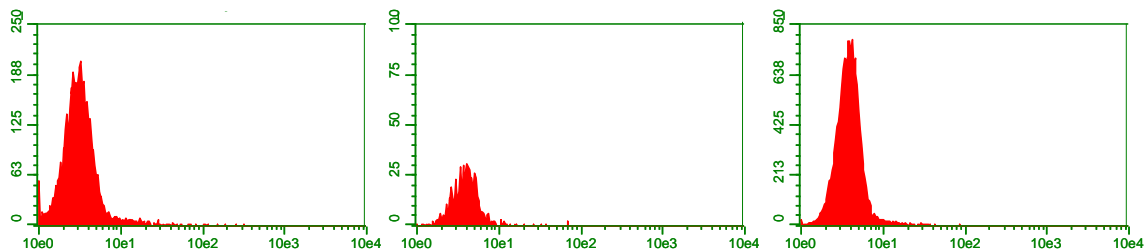
**1  $\mu$ g/mL**



**5  $\mu$ g/mL**



**10  $\mu$ g/mL**



***Flow cytometric analysis of Mouse IgG3 on human PBMC***

Antibody: Mouse IgG3 (isotype control)-Biotin (M078-6)