

MONOCLONAL ANTIBODY

Mouse IgG1 (isotype control)-Alexa Fluor® 647

Code No.	Clone	Subclass	Quantity	Concentration
M075-A64	2E12	Mouse IgG1 κ	100 μ L	1 mg/mL

SOURCE: This antibody was purified from hybridoma (clone 2E12) supernatant using protein A agarose. This hybridoma was established by fusion of mouse myeloma cell P3U1 with Balb/c mouse lymphocyte immunized with KLH.

FORMULATION: 100 μ g IgG in 100 μ L volume of PBS containing 1% BSA and 0.09% NaN₃.

*Azide may react with copper or lead in plumbing system to form explosive metal azides. Therefore, always flush plenty of water when disposing materials containing azide into drain.

STORAGE: This antibody solution is stable for one year from the date of purchase when stored at 4°C.

REACTIVITY: No specific binding is detected on human peripheral blood lymphocyte, monocyte and granulocyte.

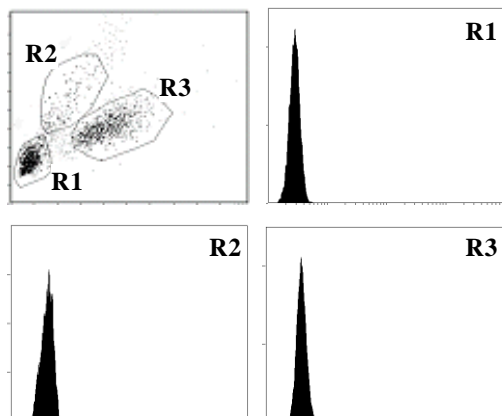
APPLICATION:

Flow cytometry: This antibody can be used as a negative isotypic control. The concentration of antibody will depend on the conditions.

Detailed procedure is provided in the following **PROTOCOLS**.

INTENDED USE:

For Research Use Only. Not for use in diagnostic procedures.



Flow cytometric analysis of mouse IgG1 reactivity on lymphocyte (R1), monocyte (R2) and granulocyte (R3).

The descriptions of the following protocols are examples. Each user should determine the appropriate condition.

PROTOCOLS:

Flow cytometric analysis for floating cells

We usually use Fisher tubes or equivalents as reaction tubes for all steps described below.

- 1) Wash the cells 3 times with washing buffer [PBS containing 2% fetal calf serum (FCS) and 0.09% NaN₃].
*Azide may react with copper or lead in plumbing system to form explosive metal azides. Therefore, always flush plenty of water when disposing materials containing azide into drain.
- 2) Resuspend the cells with washing buffer (5x10⁶ cells/mL).
- 3) Add 50 μ L of the cell suspension into each tube, and centrifuge at 500 x g for 1 minute at room temperature (20~25°C). Remove supernatant by careful aspiration.
- 4) Add 20 μ L of Clear Back (human Fc receptor blocking reagent, MBL, code no. MTG-001) to the cell pellet after tapping. Mix well and incubate for 5 minutes at room temperature.
- 5) Add the isotype control antibody at the concentrations comparable to those of the specific antibody of interest. Mix well and incubate for 30 minutes at room temperature.
- 6) Add 1 mL of the washing buffer followed by centrifugation at 500 x g for 1 minute at room temperature. Remove supernatant by careful aspiration.
- 7) Resuspend the cells with 500 μ L of the washing buffer and analyze by a flow cytometer.

Flow cytometric analysis for whole blood cells

We usually use Falcon tubes or equivalents as reaction tubes for all steps described below.

- 1) Add the isotype control antibody into each tube at the concentrations comparable to those of the specific antibody of interest.
- 2) Add 100 μ L of whole blood into each tube. Mix well and incubate for 30 minutes at room temperature (20~25°C).
- 3) Add 1 mL of the washing buffer [PBS containing 2% fetal calf serum (FCS) and 0.09% NaN₃] followed by centrifugation at 500 x g for 1 minute at room temperature. Remove supernatant by careful aspiration.
*Azide may react with copper or lead in plumbing system to form explosive metal azides. Therefore, always flush plenty of water when disposing materials containing azide into drain.
- 4) Lyse with OptiLyse® C (Beckman Coulter, code no. A11895 for analysis on Beckman Coulter instruments) or OptiLyse® B (Beckman Coulter, code no. IM1400, for analysis on BD instruments), using the procedure recommended in the respective package inserts.
- 5) Add 1 mL of H₂O to each tube and incubate for 10

minutes at room temperature.

- 6) Centrifuge at 500 x g for 1 minute at room temperature.
- 7) Add 1 mL of washing buffer followed by centrifugation at 500 x g for 1 minute at room temperature. Remove supernatant by careful aspiration.
- 8) Resuspend the cells with 500 μ L of the washing buffer and analyze by a flow cytometer.

RELATED PRODUCTS:

Please visit our website at <https://ruo.mbl.co.jp/>.

LABEL LICENSES:

This product is provided under an agreement between LIFE TECHNOLOGIES Corporation, and Medical & Biological Laboratories Co., LTD.

Alexa Fluor® is a registered trademark of Molecular Probes, Inc.