

MONOCLONAL ANTIBODY

Mouse IgG1 (isotype control)-Alexa Fluor[®] 647

Code No.	Clone	Subclass	Quantity	Concentration
M075-A64	2E12	Mouse IgG1 κ	100 μ L	1 mg/mL

SOURCE: This antibody was purified from hybridoma (clone 2E12) supernatant using protein A agarose. This hybridoma was established by fusion of mouse myeloma cell P3U1 with Balb/c mouse lymphocyte immunized with KLH.

FORMULATION: 100 μ g IgG in 100 μ L volume of PBS containing 1% BSA and 0.09% NaN₃.

*Azide may react with copper or lead in plumbing system to form explosive metal azides. Therefore, always flush plenty of water when disposing materials containing azide into drain.

STORAGE: This antibody solution is stable for one year from the date of purchase when stored at 4°C.

REACTIVITY: No specific binding is detected on human peripheral blood lymphocyte, monocyte and granulocyte.

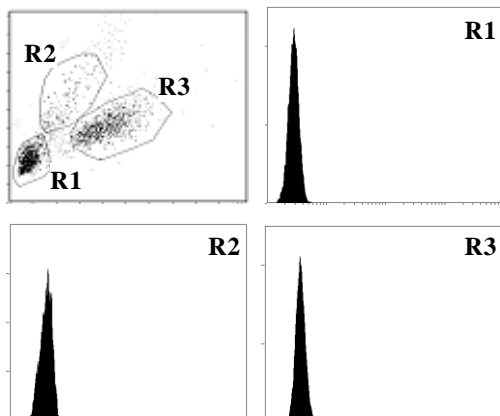
APPLICATION:

Flow cytometry: This antibody can be used as a negative isotypic control. The concentration of antibody will depend on the conditions.

Detailed procedure is provided in the following **PROTOCOLS.**

INTENDED USE:

For Research Use Only. Not for use in diagnostic procedures.



Flow cytometric analysis of mouse IgG1 reactivity on lymphocyte (R1), monocyte (R2) and granulocyte (R3).

PROTOCOLS:

Flow cytometric analysis for floating cells

We usually use Fisher tubes or equivalents as reaction tubes for all steps described below.

- 1) Wash the cells 3 times with washing buffer [PBS containing 2% fetal calf serum (FCS) and 0.09% NaN₃].
- 2) Resuspend the cells with washing buffer (5x10⁶ cells/mL).
- 3) Add 50 μ L of the cell suspension into each tube, and centrifuge at 500 x g for 1 minute at room temperature (20~25°C). Remove supernatant by careful aspiration.
- 4) Add 20 μ L of Clear Back (human Fc receptor blocking reagent, MBL, code no. MTG-001) to the cell pellet after tapping. Mix well and incubate for 5 minutes at room temperature.
- 5) Add the isotype control antibody at the concentrations comparable to those of the specific antibody of interest. Mix well and incubate for 30 minutes at room temperature.
- 6) Add 1 mL of the washing buffer followed by centrifugation at 500 x g for 1 minute at room temperature. Remove supernatant by careful aspiration.
- 7) Resuspend the cells with 500 μ L of the washing buffer and analyze by a flow cytometer.

Flow cytometric analysis for whole blood cells

We usually use Falcon tubes or equivalents as reaction tubes for all steps described below.

- 1) Add the isotype control antibody into each tube at the concentrations comparable to those of the specific antibody of interest.
- 2) Add 100 μ L of whole blood into each tube. Mix well and incubate for 30 minutes at room temperature (20~25°C).
- 3) Add 1 mL of the washing buffer [PBS containing 2% fetal calf serum (FCS) and 0.09% NaN₃] followed by centrifugation at 500 x g for 1 minute at room temperature. Remove supernatant by careful aspiration.
- 4) Lyse with OptiLyse[®] C (Beckman Coulter, code no. A11895 for analysis on Beckman Coulter instruments) or OptiLyse[®] B (Beckman Coulter, code no. IM1400, for analysis on BD instruments), using the procedure recommended in the respective package inserts.
- 5) Add 1 mL of H₂O to each tube and incubate for 10 minutes at room temperature.
- 6) Centrifuge at 500 x g for 1 minute at room temperature.
- 7) Add 1 mL of washing buffer followed by centrifugation at 500 x g for 1 minute at room temperature. Remove supernatant by careful aspiration.
- 8) Resuspend the cells with 500 μ L of the washing buffer and analyze by a flow cytometer.

RELATED PRODUCTS:

Please visit our website at <https://ruo.mbl.co.jp/>.

200728-3

LABEL LICENSES:

This product is provided under an agreement between LIFE TECHNOLOGIES Corporation, and Medical & Biological Laboratories Co., LTD, and the manufacture, use, sale or import of this product may be subject to one or more U.S. patents, pending applications, and corresponding non-U.S. equivalents, owned by or licensed to LIFE TECHNOLOGIES Corporation. For information on purchasing a license to this product for any other use, contact LIFE TECHNOLOGIES Corporation, Molecular Probes Detection Technologies, Business Development, 29851 Willow Creek Road, Eugene, OR 97402, USA, Tel: (541) 465-8300. Fax: (541) 335-0504.

Alexa Fluor[®] is a registered trademark of Molecular Probes, Inc.