

Anti-GP2 (Glycoprotein 2) (Mouse) mAb-PE

CODE No. D278-5

CLONALITY Monoclonal
CLONE 2F11-C3
ISOTYPE Rat IgG2a κ
QUANTITY 1 mL

SOURCE Purified IgG from hybridoma supernatant
IMMUNOGEN Mouse GP2, extracellular domain (recombinant, human Fc fusion protein)
FORMULATION PBS containing 1% BSA and 0.09% NaN₃

*Azide may react with copper or lead in plumbing system to form explosive metal azides. Therefore, always flush plenty of water when disposing materials containing azide into drain.

STORAGE This antibody solution is stable for one year from the date of purchase when stored at 4°C.

APPLICATION-CONFIRMED

Flow cytometry 1:10

SPECIES CROSS REACTIVITY on FCM

Species	Human	Mouse	Rat	Hamster
Cell	Not tested	Transfectant	Not tested	Not tested
Reactivity		+		

Entrez Gene ID 67133 (Mouse)

- REFERENCES**
- 1) Rattay, K., *et al.*, *J. Autoimmun.* **67**, 65-75 (2016) [FCM]
 - 2) Laphorne, S., *et al.*, *Immunology* **136**, 312-324 (2012)
 - 3) Donaldson, D. S., *et al.*, *Mucosal.Immunol.* **5**, 216-225 (2012)
 - 4) Fukuda, S., *et al.*, *J. Vis. Exp.* **58**, e3225 (2011)
 - 5) Ebisawa, M., *et al.*, *Int. Immunol.* **23**, 261-269 (2011)
 - 6) Hase, K., *et al.*, *Nature* **462**, 226-230 (2009)
 - 7) Terahara, K., *et al.*, *J. Immunol.* **180**, 7840-7846 (2008)

RELATED PRODUCTS

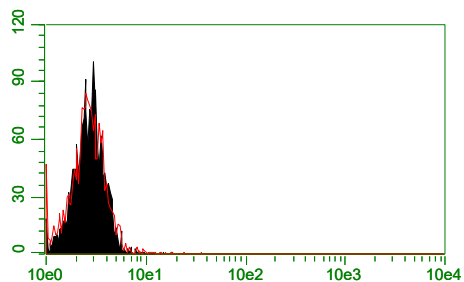
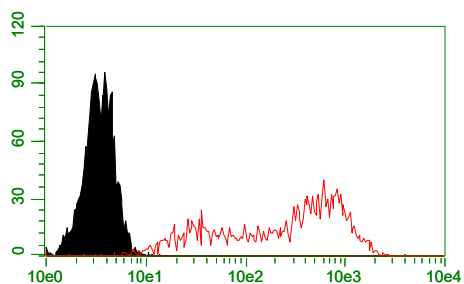
Please visit our web site <https://ruo.mbl.co.jp/>.

The descriptions of the following protocols are examples. Each user should determine the appropriate condition.

Flow cytometric analysis

- 1) Wash the cells (5×10^5 cells/sample) 1 time with 1 mL of washing buffer [PBS containing 2% fetal calf serum (FCS)].
- 2) Add 10 μ L of Clear Back (human Fc receptor blocking reagent, MBL; code no. MTG-001) to the cell pellet after tapping. Mix well and incubate for 5 min. at room temperature.
- 3) Add 40 μ L of the primary antibody at the concentration as suggested in the **APPLICATION** diluted in the washing buffer. Mix well and incubate for 30 min. at room temperature. (Optimization of antibody concentration or incubation condition is recommended if necessary.)
- 4) Wash the cells 2 times with 1 mL of washing buffer.
- 5) Resuspend the cells with 500 μ L of the washing buffer and analyze by a flow cytometer.

(Positive control for Flow cytometry; Transfectant)



Flow cytometric detection of mouse GP2

Cell

Upper: Mouse GP2/293T

Lower: Parental cell (293T)

Antibody

Open: D278-5

Closed: Isotype control (M081-5)