

# Anti-METTL13 (FEAT) (Human) mAb

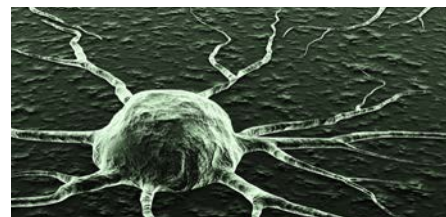
**MBL**

For Research Use Only

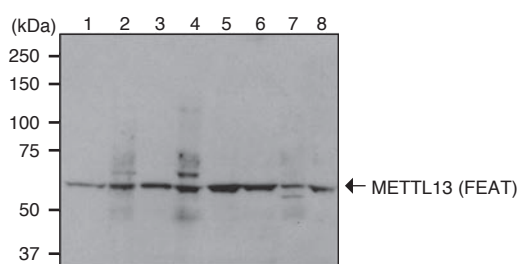
**Useful for cancer research. METTL13 (FEAT) has been reported to be overexpressed in various cancers.**

Methyltransferase-like 13 (METTL13), also known as FEAT and KIAA0859, is a 699-amino acid protein in the methyltransferase superfamily. METTL13 (FEAT) has been reported to be highly expressed in various cancers, including colorectal, pancreatic, prostate, breast, ovarian, thyroid, and non-small cell lung cancers, and is noted as a marker for cancer.

This antibody can be used for western blotting, immunoprecipitation, and immunohistochemistry in cancer research.

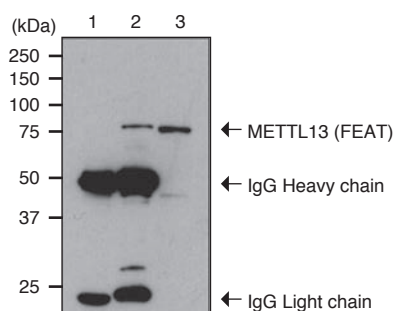


## Western blotting



Lane 1: HeLa  
Lane 2: MCF7  
Lane 3: ZR75-1  
Lane 4: A431  
Lane 5: A549  
Lane 6: MRC5  
Lane 7: HUVEC  
Lane 8: HEK293T

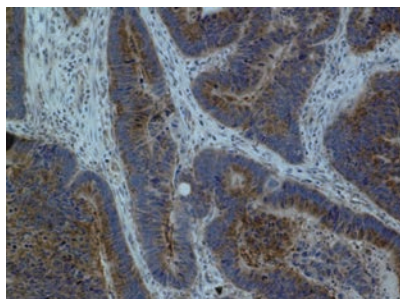
## Immunoprecipitation



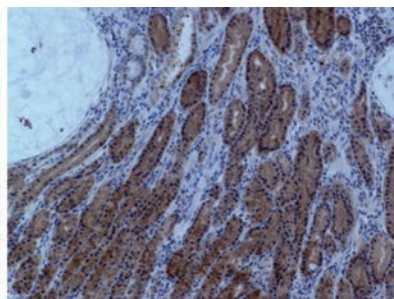
Lane 1: Mouse IgG2a (isotype control) (MBL Code: M076-3)  
Lane 2: Anti-METTL13 (FEAT) (Human) mAb (MBL Code: M196-3)  
Lane 3: Input (total cell lysate)

**Now Available!**

## Immunohistochemistry

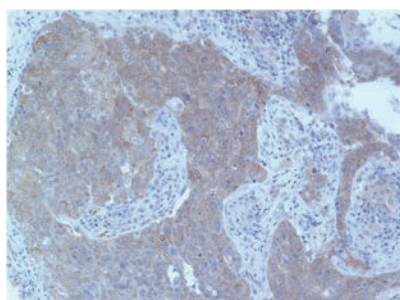


Human rectal carcinoma

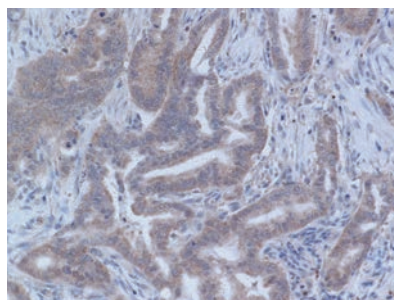


Human gastric carcinoma

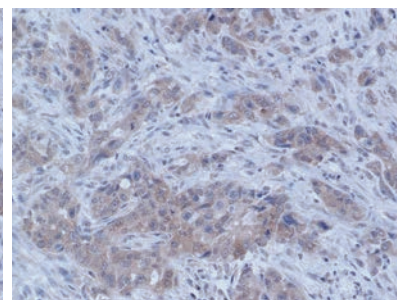
Brown: Anti-METTL13 (FEAT) (Human) mAb (MBL Code: M196-3)  
Blue: Hematoxylin



Human lung carcinoma



Human pancreatic carcinoma



Human pancreatic carcinoma

Code	Product	Clone	Isotype	Applications	Size
M196-3	Anti-METTL13 (FEAT) (Human) mAb	7F2	Mouse IgG2aκ	WB / IP / IH	100 μg/100 μL

Applications: WB: Western Blotting, IP: Immunoprecipitation, IH: Immunohistochemistry

2014.10

146147-14101

Copyright © 2014 MEDICAL & BIOLOGICAL LABORATORIES CO., LTD., All Rights Reserved.

Produced by

**MBL**

MEDICAL & BIOLOGICAL LABORATORIES CO., LTD.

KDX Nagoya Sakae Bldg. 10F  
4-5-3 Sakae, Naka-ku, Nagoya,  
Aichi 460-0008, JAPAN  
TEL: +81-52-238-1904 FAX: +81-52-238-1441  
URL: <http://ruo.mbl.co.jp>