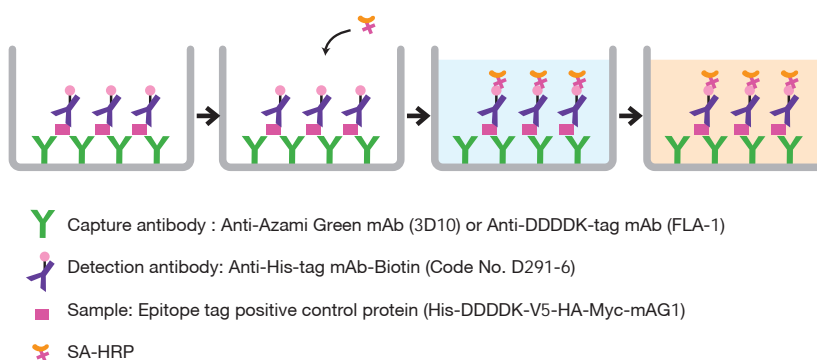
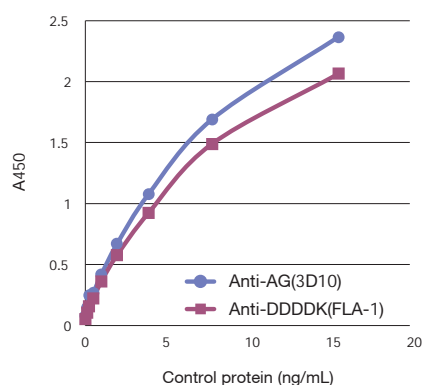


## Biotin-labeled Anti-Tag antibody



### Biotin-labeled Anti-Tag antibodies are useful for swELISA !

- Biotin-labeled tag antibodies can be used to quantify the amount of tagged protein in cell lysate samples.
- Sensitized methods, in which biotin-avidin complexes are formed, amplify signal and allow highly sensitive detection than direct methods.



Code	Product	Clone	Isotype	Applications	Size
D153-6	Anti-GFP mAb-Biotin	RQ2	Rat IgG2 $\kappa$	ELISA	50 $\mu$ L
D291-6	Anti-His-tag mAb-Biotin	OGHis	Mouse IgG2 $\kappa$	ELISA	50 $\mu$ g/50 $\mu$ L
M180-6	Anti-HA-tag mAb-Biotin	TANA2	Mouse IgG2b $\kappa$	ELISA	50 $\mu$ L
M192-6	Anti-Myc-tag mAb-Biotin	My3	Mouse IgG2b $\kappa$	ELISA	50 $\mu$ L
M047-6	Anti-Myc-tag mAb-Biotin	PL14	Mouse IgG1 $\kappa$	WB, IC	100 $\mu$ L

WB: Western Blotting IC: Immunocytochemistry

### Example test using a combination of solid state and detection antibodies for swELISA

		Code	Detection antibodies			
			D153-6	D291-6	M180-6	M192-6
Capture antibodies	Code	Product	Anti-GFP mAb-Biotin	Anti-His-tag mAb-Biotin	Anti-HA-tag mAb-Biotin	Anti-Myc-tag mAb-Biotin
	D291-3	Anti-His-tag mAb	○		○	○
	M185-3	Anti-DDDDK mAb		○	○	○
	598	Anti-GFP pAb	○			
	M180-3	Anti-HA-tag				○
	M103-3M	Anti-Azami Green mAb		○		

This is an example of the usable antibody combinations investigated by our company. For more details, please refer to the data sheet for each biotin-labeled antibody.

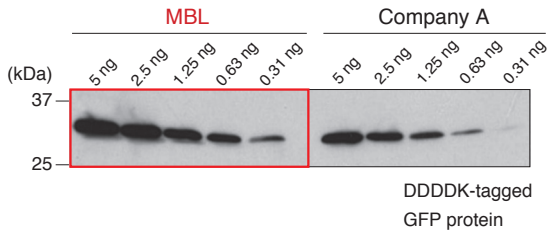


## Anti-DDDDK-tag mAb (clone: FLA-1)

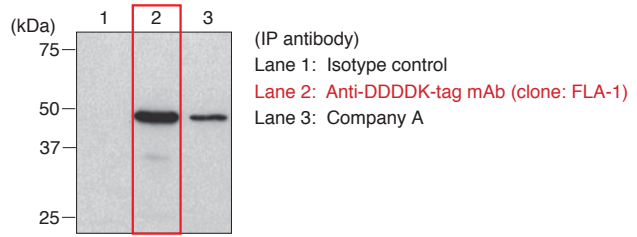
MBL Code: M185-3L

### Western blotting

High sensitivity



### Immunoprecipitation



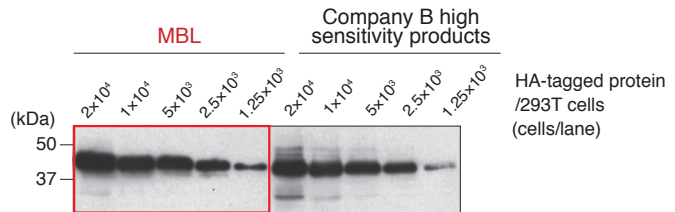
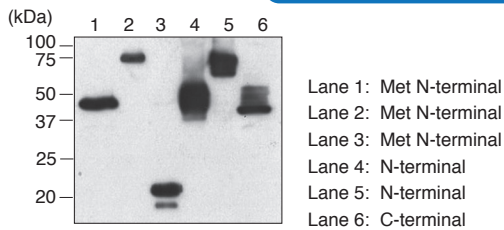
## Anti-HA-tag mAb (clone: TANA2)

MBL Code: M180-3

### Western blotting

Detect N-terminal, C-terminal and internal HA-tags

High sensitivity

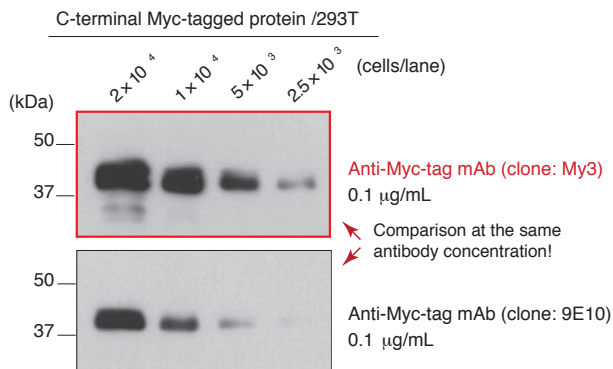


## Anti-Myc-tag mAb (clone: My3)

MBL Code: M192-3

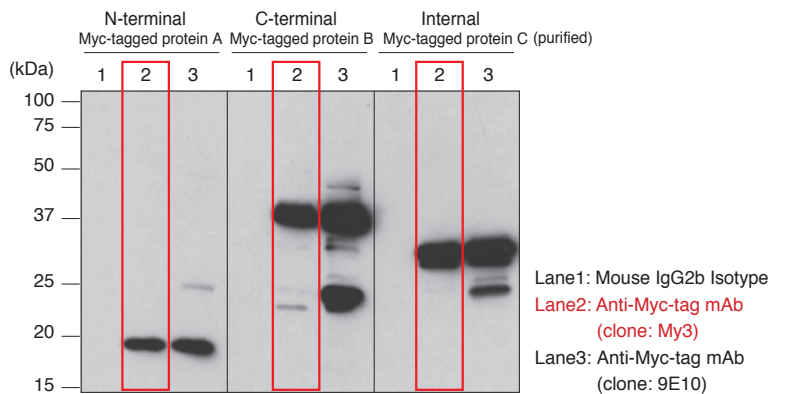
### Western blotting

High sensitivity



### Immunoprecipitation

High specificity

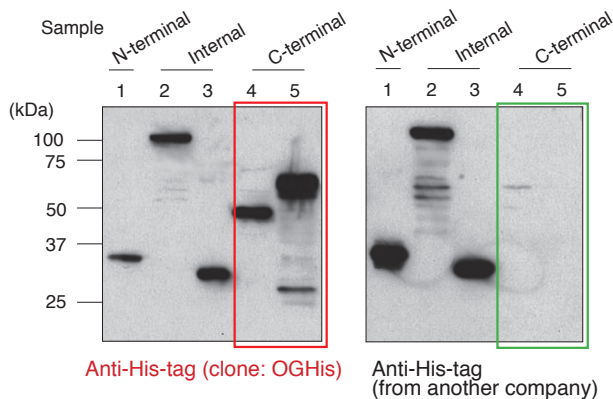


## Anti-His-tag mAb (clone: OGHis)

MBL Code: D291-3

### Western blotting

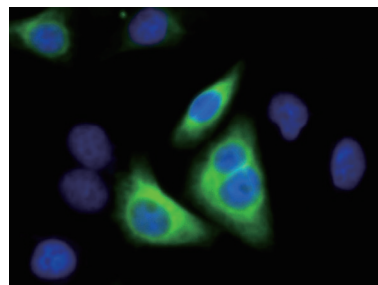
High reactivity



### Immunocytochemistry

Optimal for cell staining

High S/N ratio



Cell: His tagged calnexin (ER marker) transfected HeLa  
Green: Anti-His-tag  
Blue: DAPI